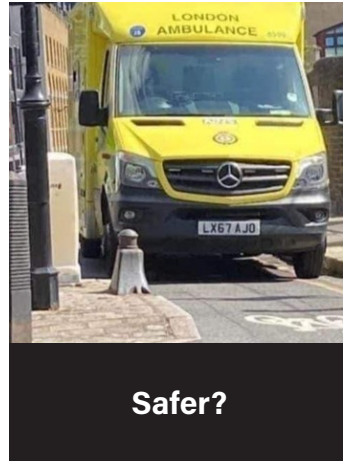
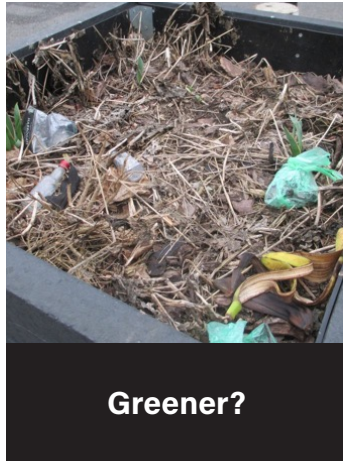
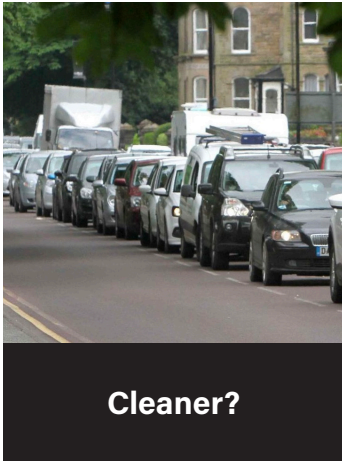


# SAY NO TO BARNSBURY & LAYCOCK LTN



**Barnsbury is already green... spend money on residents' real needs.**

- Say NO to longer journeys
- Say NO to main road congestion
- Say NO to more pollution on boundary roads
- Say NO to the negative impact on businesses and trade
- Say NO to increased bus journey times
- Say NO to delays to emergency services
- Say NO to a scheme which benefits a tiny minority of affluent residents
- Say NO to *MORE* road closures

**Solutions to traffic blackspots do not require neighborhood-wide restrictions**

See over page for steps you can take to **SAY NO**

## KNOW THE FACTS: Low Traffic Neighbourhoods don't work.

Closing or "filtering" roads in an arbitrary residential "neighbourhood" increases journey times and diverts traffic on to main roads where it causes congestion, pollution and increased CO<sub>2</sub>. This has already happened in other boroughs and other Islington wards where LTNs have been imposed. Don't let it happen here.

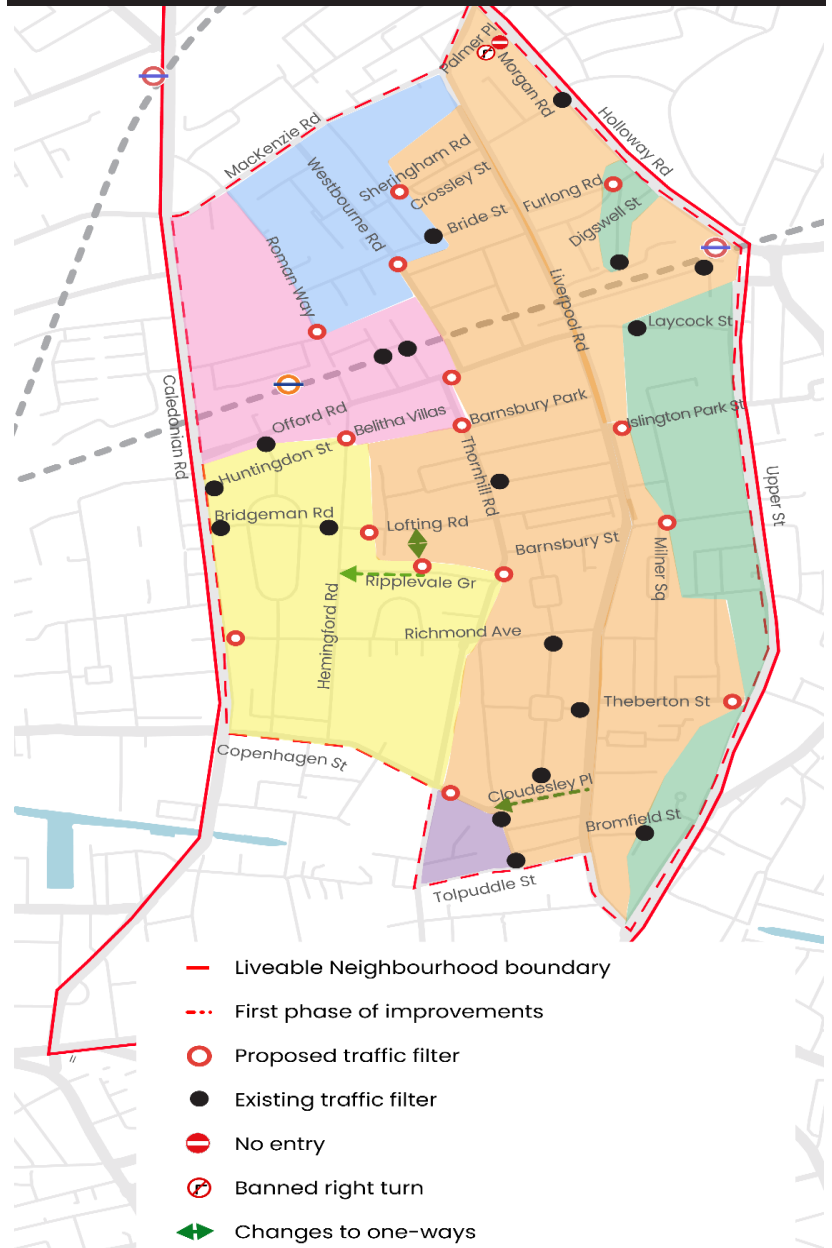
Apart from a tiny minority of cyclists, everyone else suffers, especially those who rely on cars, vans and buses: the old, the disabled, the infirm, most tradespeople, and the shops, restaurants and small businesses which are the lifeblood of the area. LTNs are particularly unfair on those already disadvantaged by living on main roads.

Following a deeply flawed "consultation" process, Islington Council now want to extend their failed LTN programme to Barnsbury & Laycock, re-branded as a so-called "Liveable Neighbourhood" proposal. See: <https://www.islington.gov.uk/roads/people-friendly-streets/liveable-neighbourhoods/barnsbury-laycock>

They've given us just one month to say NO! The costs of the Council's proposals hugely outweigh the benefits. The Barnsbury conservation area is already eminently green, quiet, safe and a great place in which to live and work. Certainly, there are many things in which the Council could spend money on - disadvantaged communities, schools, potholes, pavements and sorting out our main roads - but we don't need or want an LTN.

Proposed LTN restrictions shown below on map.

**NOTE:** Residents will only be permitted to drive within their coloured subsection of the map, and will be forced to use one designated entry/exit point from there



**Get involved. Add your feedback to the Council survey by OCT 22:**



Email the Council at:  
[barnsbury.laycock.LN@islington.gov.uk](mailto:barnsbury.laycock.LN@islington.gov.uk)



Council survey: Use QR code or link below:  
[https://www.letstalk.islington.gov.uk/barnsbury-laycock-liveable-neighbourhood/survey\\_tools/barnsbury-and-laycock-phase-2-engagement-survey](https://www.letstalk.islington.gov.uk/barnsbury-laycock-liveable-neighbourhood/survey_tools/barnsbury-and-laycock-phase-2-engagement-survey)

**SAY NO to Barnsbury & Laycock LTN ! [keepbarnsburymoving.com](http://keepbarnsburymoving.com)**